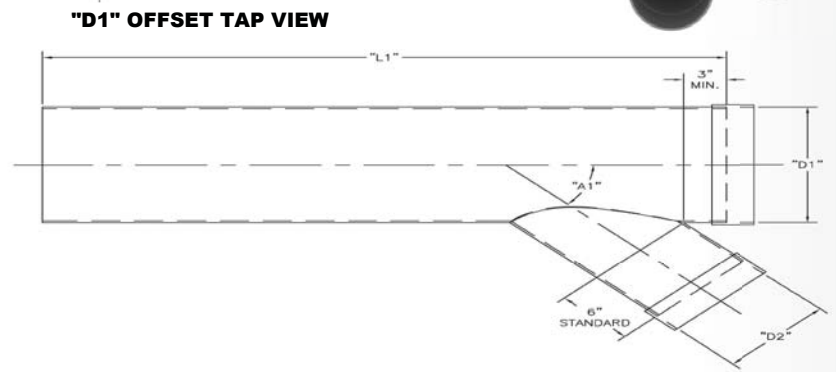
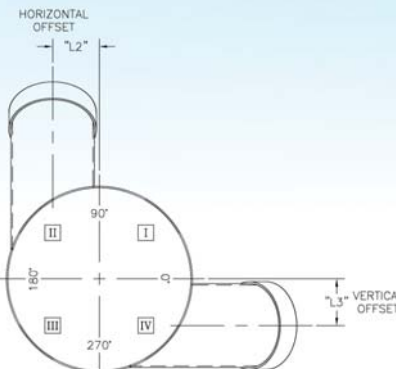


CORROSION RESISTANT DUCT & FITTINGS



STRAIGHT DUCT WITH LATERAL TAP

| DUCT DIAMETER | WALL THICKNESS | | LATERAL TAP DIAMETER |
|---------------|----------------|--------|----------------------|
| | EXTRUDED | ROLLED | "D2" |
| 4 | 0.250" | | 4" AND BELOW |
| 6 | 0.188" | | 6" AND BELOW |
| 8 | 0.188" | | 8" AND BELOW |
| 10 | 0.188" | | 10" ANF BELOW |
| 12 | 0.188" | 0.125" | 12" AND BELOW |
| 14 | 0.188" | 0.125" | 14" AND BELOW |
| 16 | 0.188" | 0.125" | 16" AND BELOW |
| 18 | 0.188" | 0.125" | 18" AND BELOW |
| 20 | | 0.125" | 20" AND BELOW |
| 22 | | 0.125" | 22" AND BELOW |
| 24 | | 0.125" | 24" AND BELOW |
| 26 | | 0.125" | 26" AND BELOW |
| 28 | | 0.188" | 28" AND BELOW |
| 30 | | 0.188" | 30" AND BELOW |
| 32 | | 0.188" | 32" AND BELOW |
| 34 | | 0.188" | 34" AND BELOW |
| 36 | | 0.188" | 36" AND BELOW |
| 38 | | 0.188" | 38" AND BELOW |
| 40 | | 0.188" | 40" AND BELOW |
| 42 | | 0.188" | 42" AND BELOW |
| 44 | | 0.188" | 44" AND BELOW |
| 46 | | 0.188" | 46" AND BELOW |
| 48 | | 0.188" | 48" AND BELOW |
| 50 | | 0.188" | 50" AND BELOW |
| 52 | | 0.188" | 52" AND BELOW |
| 54 | | 0.188" | 54" AND BELOW |
| 56 | | 0.188" | 56" AND BELOW |
| 58 | | 0.250" | 58" AND BELOW |
| 60 | | 0.250" | 60" AND BELOW |
| 62 | | 0.250" | 62" AND BELOW |
| 64 | | 0.250" | 64" AND BELOW |
| 66 | | 0.250" | 66" AND BELOW |
| 68 | | 0.250" | 68" AND BELOW |
| 70 | | 0.250" | 70" AND BELOW |
| 72 | | 0.250" | 72" AND BELOW |
| 74 | | 0.250" | 74" AND BELOW |
| 76 | | 0.250" | 76" AND BELOW |
| 78 | | 0.250" | 78" AND BELOW |
| 80 | | 0.250" | 80" AND BELOW |



"A1" STANDARD ENTRY ANGLES: 15°, 30°, 45°, & 60°

STANDARD DUCT LENGTHS

| "D1" DIAMETER | "L1" AVAILABLE LENGTHS |
|---------------|------------------------|
| 4"-18" | 2' THROUGH 20' |
| 20" - 80" | 2' THROUGH 12' |

AVAILABLE MATERIALS OF CONSTRUCTION: TYPE II PVC, POLYPROPYLENE, CPVC, DUAL LAMINATE, FRP, AND PVDF

NOTES:

- STANDARD COLLAR CONNECTIONS SHOWN / FLANGED CONNECTIONS ARE AVAILABLE UPON REQUEST
- CUSTOM DIAMETERS, LENGTHS, AND ENTRY ANGLES ARE AVAILABLE UPON REQUEST
- FIRESIST™ FM APPROVED DUCT AVAILABLE UPON REQUEST



Corporate Headquarters:
144 Industrial Drive
Forest City, NC 28043

Mailing Address:
P.O. Box 1287
Forest City, NC 28043

Phone: (828) 245-9836
Fax: (828) 245-1437
www.KCHSERVICES.com